

7

SILVYN® Protective cable conduit & cable carrier systems




The universal range of SILVYN® protection and guidance systems protects cables effectively against dust, moisture, mechanical, thermal, and chemical influences. The versatile SILVYN® CHAIN range of energy supply chains also protects and guides cable in dynamic applications.

Application range



- Industrial machinery and plant engineering
- Automotive industry
- Machine tool manufacture
- Renewable energies
- Wherever cables require additional protection or guidance

562 Quick select chart

Protective conduit

- 563 SILVYN® RILL PA 6**
Non-metallic flexible quick-connect conduit
- 564 SILVYN® RILL PA 6 SINUS**
Non-metallic flexible conduit
- 565 SILVYN® RILL PA 12**
Non-metallic highly flexible quick-connect conduit
- 566 SILVYN® SPLIT PA 6/PP**
Non-metallic flexible conduit
- 567 SILVYN® EL/ELU/ELÖ/ELT** 
Flexible reinforced spiral PVC conduit
- 568 SILVYN® FPS**
Continuous flex spiral steel-reinforced PVC conduit
- 569 SILVYN® FD-PU**
Flexible reinforced spiral PVC conduit
- 570 SILVYN® AS-P**
Flexible steel-reinforced PVC conduit
- 571 SILVYN® AS**
Flexible reinforced spiral PVC conduit
- 572 SILVYN® EDU-AS**
Flexible metal conduit for heavy mechanical stress
- 573 SILVYN® HTDL** 
Liquid-tight metal conduit with PVC jacket
- 574 SILVYN® FG NM**
Flexible liquid-tight conduit
- 575 SILVYN® FG**
Flexible steel-reinforced liquid-tight conduit
- 576 SILVYN® FPAS**
Flexible non-metallic conduit
- #### Conduit connectors
- 577 SILVYN® KCLICK NPT/KCLICK PG/KCLICK-M**
Straight connectors for SILVYN® RILL PA 6 & PA 12 conduit
- 578 SILVYN® KCLICK 90° N/KCLICK 90° P/KCLICK 90° M** 
Angled connectors for SILVYN® RILL PA 6 & PA 12 conduit
- 579 SILVYN® SPLIT COV/SPLIT COS**
Support assemblies for SILVYN® SPLIT conduit
- 580 SILVYN® MPC/MPC-M**
Straight connectors for SILVYN® EL/ELU/ELÖ/ELT conduit
- 581 SILVYN® MPC 90°/MPC 90° M**
Angled connectors for SILVYN® EL/ELU/ELÖ/ELT conduit
- 582 SILVYN® LKI/LKI-M**
Connectors for SILVYN® FD-PU & SILVYN® FPS conduit


Conduit, sleeving & cable carrier systems

- 582 SILVYN® BW/BW-M**
Mounting brackets for SILVYN® LKI/LKI-M connectors
- 583 SILVYN® USK/USK-M**
Connectors for SILVYN® FD-PU & SILVYN® FPS conduit
- 584 SILVYN® US/US-M**
Brass connectors for SILVYN® AS, AS-P, EDU-AS, FPS & FD-PU conduit
- 585 SILVYN® MSK-M US/MSK-M BRUSH** 
Brass connector and strain relief for EMC applications
- 586 SILVYN® MSK-M ATEX/MSK-M ATEX BRUSH**
Brass connector and strain relief for hazardous EMC environments
- 587 SILVYN® COMPACT** 
Brass connector for SILVYN® HTDL conduit
- 588 SILVYN® HYGIENIC**
Stainless steel connector for SILVYN® FG & FG NM conduit
- 589 SILVYN® FPAX-M**
Watertight connector for SILVYN® FPAS conduit

Sleeving

- 590 SILVYN® CC/CC FR**
Non-fraying expandable PET sleeving
- 591 SILVYN® PET/PET FR**
Economical general purpose PET sleeving
- 592 SILVYN® SW/SW FR**
Semi-rigid PET sleeve with split wrap for easy installation

Cutting tools

- 593 Serrated edge scissors**
- 593 Bench-mounted hot knife**
- 593 Conduit scissors** 

Cable carrier systems

- 594 SILVYN® CHAIN**

Quick select chart

Product name	Temperature range	Flexibility	Cross-pressure strength	Tensile strength	Bending radius	Oil resistance	Solvent resistance	Flame resistance	Page
SILVYN® RILL PA 6	-40°C to +115°C	★★	★★	★★	★★★★	★★★★★	★★	★★★★★	563
SILVYN® RILL PA 6 SINUS	-40°C to +140°C	★★	—	★★	★★★★	★★★★★	★★	★★★★	564
SILVYN® RILL PA 12	-50°C to +100°C	★★★★★	★★	★★	★★★★	★★★★★	★★★★	★★★★	565
SILVYN® SPLIT PA 6	-40°C to +120°C	★★	★★	★	★★★★	★★★★★	★★	★★★★	566
SILVYN® SPLIT PP	-40°C to +135°C	★★	★★	★	★★	★★	★★	★★★★	566
SILVYN® EL	-20°C to +70°C	★★	★★	★★	★★	★★	★	★	567
SILVYN® ELU	-20°C to +70°C	★★	★★	★★	★★	★★	★	★	567
SILVYN® ELÖ	-20°C to +70°C	★★	★★	★★	★★	★★★	★	★	567
SILVYN® ELT	-20°C to +90°C	★★	★★	★★	★★	★	★	★★	567
SILVYN® FPS	-20°C to +80°C	★★★★★	★★	★★	★★★★★	★★	★★	★	568
SILVYN® FD-PU	-40°C to +80°C	★★★★★	★★	★★	★★★★★	★★★★★	★★	★★	569
SILVYN® AS-P	-25°C to +80°C	★★★★	★★	★★	★★★★	★★	★★	★	570
SILVYN® AS	up to +220°C	★★★★	★★	★★	★★★★★	★★★★★	★★★★★	★★★★★	571
SILVYN® EDU-AS	up to +220°C	★★★★	★★	★★★★	★★★★★	★★★★★	★★★★★	★★★★★	572
SILVYN® HTDL	-40°C to +105°C	★★	★★★★★	★★★★	★★	★★	★	★★	573
SILVYN® FG NM	-20°C to +60°C	★	★★	★★	★	★★★	★	★	574
SILVYN® FG	-20°C to +60°C	★	★★★★★	★★★★	★	★★★	★	★	575
SILVYN® FPAS	-20°C to 100°C	★★	★★	★★★★	★★★★	★★★★★	★★	★★★★	576

SILVYN® RILL PA 6

Non-metallic flexible quick-connect conduit



SILVYN® RILL PA 6 is a flexible, non-metallic corrugated conduit suitable for use in various industrial applications. It is resistant to liquids, oils, and gases, and highly resistant to acids and solvents. For use in controls, moving machine parts, motor and internal connections, and in industrial, medical, or electronic applications.

Application advantage

- Halogen-free, flame retardant, and self-extinguishing
- Durable, long-lasting conduit is rugged yet flexible

Approvals



Complete the installation



SILVYN®
KLICK
page 577



SILVYN®
KLICK 90°
page 578

Technical Data

Material:	halogen- & silicone-free polyamide	Color:	black (RAL 9011) gray (RAL 7031)
Temperature range:	-40°C to +115°C	Approvals:	V-0 per UL 94 RoHS DNV-GL certified Lloyd's Register
- short-term:	up to +150°C		

Part number		Outer diameter		Inner diameter		Bend radius		Conduit coil put-ups	Thread size for fittings		
black	gray	in	mm	in	mm	in	mm		ft	NPT	PG
164 ft put-ups											
61746935	61746939	0.394	10.0	0.256	6.5	0.512	13.0	164	NPT ¼"	PG 7	M10 x 1.0
61746945	61746940	0.512	13.0	0.394	10.0	0.787	20.0	164	NPT ¼"	PG 9	M12 x 1.5
61746955	61746950	0.622	15.8	0.472	12.0	1.378	35.0	164	NPT ⅜"	PG 11	M16 x 1.5
61747015	61747010	0.728	18.5	0.563	14.3	1.575	40.0	164	—	PG 13	—
61746965	61746960	0.835	21.2	0.650	16.5	1.772	45.0	164	NPT ½"	PG 16	M20 x 1.5
61746975	61746970	1.122	28.5	0.906	23.0	2.165	55.0	164	NPT ¾"	PG 21	M25 x 1.5
82 ft put-ups											
61746985	61746980	1.358	34.5	1.142	29.0	2.559	65.0	82	NPT 1"	PG 29	M32 x 1.5
61746995	61746990	1.673	42.5	1.417	36.0	3.543	90.0	82	NPT 1¼"	PG 36	M40 x 1.5
61747005	61747000	2.146	54.5	1.890	48.0	3.937	100.0	82	NPT 1½"	PG 48	M50 x 1.5

If not otherwise specified, all values relating to the product are nominal values. Photographs are not to scale and are not true representations of the products in question.

SILVYN® RILL PA 6 SINUS

Non-metallic flexible conduit



SILVYN® RILL PA 6 SINUS is a flexible, non-metallic corrugated conduit suitable for use in various industrial applications. It is highly resistant to oils, gases, acids, and other chemicals. Conduit is designed for use in controls, moving machine parts, motor and internal connections, and in industrial, medical, or electronic applications.

Application advantage

- Fast and easy assembly
- Halogen- and cadmium-free
- Durable, long-lasting conduit is rugged yet flexible

Approvals



Complete the installation



SILVYN®
SPLIT COS
page 579

Technical data

Material:	heat-modified polyamide	Color:	black (RAL 9005)
Temperature range:	-40°C to +140°C	Approvals:	RoHS

Part number	Outer diameter		Inner diameter		Conduit coil put-ups
	in	mm	in	mm	
61806550	0.394	10.0	0.264	6.7	164
61806555	0.449	11.4	0.331	8.4	164
61806560	0.512	13.0	0.390	9.9	164
61806565	0.619	15.7	0.481	12.2	164
61806570	0.835	21.2	0.654	16.6	164
61806575	1.001	25.4	0.839	21.3	164
61806580	1.115	28.3	0.914	23.2	164

SILVYN® RILL PA 12

Non-metallic highly flexible quick-connect conduit



SILVYN® RILL PA 12 is a continuous flex, non-metallic corrugated conduit. It is resistant to liquids, oils, and gases, and highly resistant to acids and solvents. High flexibility makes it an excellent choice for machine and plant construction where frequent flexing and bending is required. It is also for use in controls, moving machine parts, motor and internal connections, and in industrial, medical, or electronic applications.

Application advantage

- Halogen-free, flame retardant, and self-extinguishing
- Durable, long-lasting conduit is rugged yet flexible
- Designed for continuous movement

Approvals



Railway:
DB, SNCF

Complete the installation



SILVYN®
KLICK
page 577



SILVYN®
KLICK 90°
page 578

Technical Data

Material:	halogen- & silicone-free polyamide	Color:	black (RAL 9011) gray (RAL 7031)
Temperature range:	-50°C to +100°C - short-term: up to +150°C	Approvals:	V-0 per UL 94 RoHS DNV-GL certified Lloyd's Register

Part number		Outer diameter		Inner diameter		Bend radius		Conduit coil put-ups	Thread size for fittings		
black	gray	in	mm	in	mm	in	mm		NPT	PG	metric
164 ft put-ups											
61815105	61815100	0.394	10.0	0.256	6.5	0.512	13.0	164	NPT 1/4"	PG 7	M10 x 1.0
61815115	61815110	0.512	13.0	0.394	10.0	0.591	15.0	164	NPT 1/4"	PG 9	M12 x 1.5
61815125	61815120	0.622	15.8	0.472	12.0	0.866	22.0	164	NPT 3/8"	PG 11	M16 x 1.5
61815185	61815180	0.728	18.5	0.563	14.3	1.063	27.0	164	—	PG 13	—
61815135	61815130	0.835	21.2	0.650	16.5	1.378	35.0	164	NPT 1/2"	PG 16	M20 x 1.5
61815145	61815140	1.122	28.5	0.906	23.0	1.772	45.0	164	NPT 3/4"	PG 21	M25 x 1.5
82 ft put-ups											
61815155	61815150	1.358	34.5	1.142	29.0	1.969	50.0	82	NPT 1"	PG 29	M32 x 1.5
61815165	61815160	1.673	42.5	1.417	36.0	3.150	80.0	82	NPT 1 1/4"	PG 36	M40 x 1.5
61815175	61815170	2.146	54.5	1.890	48.0	3.937	100.0	82	NPT 1 1/2"	PG 48	M50 x 1.5

If not otherwise specified, all values relating to the product are nominal values. Photographs are not to scale and are not true representations of the products in question.

SILVYN® SPLIT PA 6/PP

Non-metallic flexible conduit



SILVYN® SPLIT is a flexible corrugated conduit suitable for various industrial applications. It is highly resistant to oils, gases, acids, and other chemicals. Conduit is designed for use in controls, moving machine parts, motor and internal connections in industrial, medical, or electronic applications.

Application advantage

- Fast and easy assembly
- Halogen- and cadmium-free
- Durable, long-lasting conduit is rugged yet flexible
- IP43 with SILVYN® SPLIT COV

Approvals



Complete the installation



SILVYN®
SPLIT COV
page 579



SILVYN®
SPLIT COS
page 579

Technical data

Material:	polyamide 6 or polypropylene	Color:	black (RAL 9005)
Temperature range:		IP Protection:	IP43 (with SILVYN® SPLIT COV)
- SILVYN® SPLIT PA 6:	-40°C to +120°C	Approvals:	RoHS
- SILVYN® SPLIT PP:	-40°C to +135°C		
- SILVYN® SPLIT PP UV:	-40°C to +105°C		

Part number			Outer diameter		Inner diameter		Bend radius		Conduit coil put-ups	Thread size for fittings	
SPLIT PA 6	SPLIT PP	SPLIT PP UV	in	mm	in	mm	in	mm		ft	PG
61806621	61806615	61806100	0.394	10.0	0.248	6.3	0.591	15.0	164	—	—
61806620	61806625	61806110	0.528	13.4	0.331	8.4	0.591	15.0	164	PG 9	M16
61806631	61806616	61806120	0.634	16.1	0.433	11.0	0.591	15.0	164	—	—
61806630	61806635	61806130	0.729	18.5	0.493	12.5	0.591	15.0	164	PG 13.5	M20
61806641	61806617	61806140	0.847	21.5	0.630	16.0	0.788	20.0	164	—	—
61806640	61806645	61806150	0.997	25.3	0.756	19.2	0.985	25.0	164	PG 21	M25
61806650	61806655	61806160	1.214	30.8	0.922	23.4	1.379	35.0	164	PG 29	M32
61806651	61806618	61806170	1.399	35.5	1.076	27.3	1.379	35.0	164	—	—
61806660	61806665	61806180	1.631	41.4	1.221	31.0	1.576	40.0	82	PG 29	M40
61806670	61806675	61806190	2.128	54.0	1.682	42.7	2.758	70.0	82	—	M50
61806671	61806619	61806200	3.144	79.8	2.660	67.5	3.743	95.0	33	—	—
61806672	61806622	61806210	4.039	102.5	3.448	87.5	3.940	100.0	33	—	—

If not otherwise specified, all values relating to the product are nominal values. Photographs are not to scale and are not true representations of the products in question.

SILVYN® EL/ELU/ELÖ/ELT

Flexible reinforced spiral PVC conduit

NEW



SILVYN® EL/ELU/ELÖ/ELT conduits are designed with a flexible PVC casing that has a rigid PVC spiral welded into the conduit. This allows them to be very flexible while maintaining their shape.

Application advantage

- Smooth inner walls allow cables to be pulled through easily
- Durable, long-lasting conduit is rugged yet flexible

Approvals



Complete the installation



SILVYN®
MPC
page 580



SILVYN®
MPC 90°
page 581

Technical data

Material: PVC sheath with rigid PVC spiral

Temperature range:
- SILVYN® ELT: -20°C to +90°C

Color:
- SILVYN® EL: gray (RAL 7001)
- SILVYN® ELU: black (RAL 9005)
- SILVYN® ELÖ: green (RAL 6001)
- SILVYN® ELT: blue (RAL 5012)

Approvals: UL thermoplastic tubing
RoHS

Part number				Outer diameter		Inner diameter		Bend radius		Conduit coil put-ups	Thread size for fittings	
gray	black	green	blue	in	mm	in	mm	in	mm		ft	PG
61747360	61751790	61751610	61751700	0.571	14.5	0.394	10	0.984	25	98	PG 9	M16 x 1.5/1
61747370	61751791	61751620	61751710	0.650	16.5	0.472	12	0.984	25	98	PG 11, PG 13/1	M16/2, M20/1 x 1.5
61747380	61751792	61751630	61751720	0.827	21.0	0.630	16	1.378	35	98	PG 13/2, PG 16	M20 x 1.5/2
61747390	61751793	61751640	61751730	1.083	27.5	0.866	22	1.772	45	98	PG 21	M25 x 1.5
61747400	61751794	61751650	61751740	1.201	30.5	0.984	25	2.165	55	98	PG 29/1	M32 x 1.5/1
61747410	61751795	61751660	61751750	1.319	33.5	1.102	28	2.362	60	98	PG 29/2	M32 x 1.5/2
61747420	61751796	61751670	61751760	1.614	41.0	1.378	35	3.150	80	98	PG 36	M40 x 1.5
61747430	61751797	61751680	61751770	1.827	46.4	1.575	40	4.134	105	98	PG 42	M50 x 1.5
61747440	61751798	61751690	61751780	2.244	57.0	1.969	50	4.724	120	98	PG 48	M63 x 1.5

If not otherwise specified, all values relating to the product are nominal values.
Photographs are not to scale and are not true representations of the products in question.

SILVYN® FPS

Continuous flex spiral steel-reinforced PVC conduit



SILVYN® FPS is designed with an insulated spiral steel spring with a PVC jacket, which creates a continuous flexing conduit. It is excellent for applications where abrasion resistance is a concern.

Application advantage

- Durable, long-lasting conduit is rugged yet flexible
- Silicone-free
- UV- and chemical-resistant
- Airtight and watertight

Approvals



Complete the installation



SILVYN®
USK
page 583



SILVYN®
LKI
page 582

Technical data

Material:	PVC with insulated steel spiral	Color:	gray
Temperature range:	-20°C to +80°C	Approvals:	RoHS

Part number	Outer diameter		Inner diameter		Bend radius		Conduit coil put-ups ft	Thread size for fittings		
	in	mm	in	mm	in	mm		PG	SILVYN® LKI-M	SILVYN® USK
82 ft put-ups										
61711550	0.394	10.0	0.276	7.0	0.315	8.0	82	PG 7	M12 x 1.5	M10 x 1.5
61711590	0.551	14.0	0.394	10.0	0.394	10.0	82	PG 9	M16 x 1.5	M12 x 1.5
61711630	0.669	17.0	0.512	13.0	0.512	13.0	82	PG 11	M20 x 1.5	M16 x 1.5
61711670	0.748	19.0	0.591	15.0	0.591	15.0	82	PG 13	—	—
61711710	0.827	21.0	0.630	16.0	0.669	17.0	82	PG 16	M25 x 1.5	M20 x 1.5
61711750	1.063	27.0	0.866	22.0	0.787	20.0	82	PG 21	M32 x 1.5	M25 x 1.5
61711790	1.417	36.0	1.142	29.0	0.984	25.0	82	PG 29	M40 x 1.5	M32 x 1.5
61711830	1.772	45.0	1.496	38.0	1.417	36.0	82	PG 36	M50 x 1.5	M40 x 1.5
61711910	2.205	56.0	1.890	48.0	1.575	40.0	82	PG 48	M63 x 1.5	M50 x 1.5
32 ft put-ups										
61721690	0.394	10.0	0.276	7.0	0.315	8.0	32	PG 7	M12 x 1.5	M10 x 1.5
61721700	0.551	14.0	0.394	10.0	0.394	10.0	32	PG 9	M16 x 1.5	M12 x 1.5
61721710	0.669	17.0	0.512	13.0	0.512	13.0	32	PG 11	M20 x 1.5	M16 x 1.5
61721720	0.748	19.0	0.591	15.0	0.591	15.0	32	PG 13	—	—
61721730	0.827	21.0	0.630	16.0	0.669	17.0	32	PG 16	M25 x 1.5	M20 x 1.5
61721740	1.063	27.0	0.866	22.0	0.787	20.0	32	PG 21	M32 x 1.5	M25 x 1.5
61721750	1.417	36.0	1.142	29.0	0.984	25.0	32	PG 29	M40 x 1.5	M32 x 1.5
61721760	1.772	45.0	1.496	38.0	1.417	36.0	32	PG 36	M50 x 1.5	M40 x 1.5
61721780	2.205	56.0	1.890	48.0	1.575	40.0	32	PG 48	M63 x 1.5	M50 x 1.5

If not otherwise specified, all values relating to the product are nominal values. Photographs are not to scale and are not true representations of the products in question.

SILVYN® FD-PU

Continuous flex spiral steel-reinforced PUR conduit



SILVYN® FD-PU is designed with a PVC-insulated spiral steel spring and a PUR jacket to provide a durable continuous flexing conduit. Its PUR jacket makes it suitable for applications in harsh environments as well as automated machines, machine tools, and switchgears. It is also suited for cleanroom applications.

Application advantage

- Halogen- and cadmium-free, resistant to oils, gases, UV, acids, and alkalis
- Suitable for cleanroom applications: airtight, watertight, and does not outgas
- Highly abrasion-proof

Approvals



Complete the installation



SILVYN®
USK
page 583



SILVYN®
LKI
page 582

Technical data

Material:	polyurethane jacket with PVC-insulated spring steel wire spiral	Color:	metallic blue
Temperature range:	-40°C to +80°C	Approvals:	V-2 per UL 94 RoHS

Part number	Outer diameter		Inner diameter		Bend radius		Conduit coil put-ups ft	PG	Thread size for fittings	
	in	mm	in	mm	in	mm			SILVYN® LKI-M	SILVYN® USK-M
164 ft put-ups										
64453662	0.394	10.0	0.276	7.0	0.315	8.0	164	PG 7	M12 x 1.5	M10 x 1.5
64453672	0.551	14.0	0.394	10.0	0.394	10.0	164	PG 9	M16 x 1.5	M12 x 1.5
64453682	0.669	17.0	0.512	13.0	0.512	13.0	164	PG 11	M20 x 1.5	M16 x 1.5
64453692	0.748	19.0	0.591	15.0	0.591	15.0	164	PG 13	—	—
64453702	0.827	21.0	0.630	16.0	0.669	17.0	164	PG 16	M25 x 1.5	M20 x 1.5
64453712	1.063	27.0	0.827	21.0	0.787	20.0	164	PG 21	M32 x 1.5	M25 x 1.5
82 ft put-ups										
64453721	1.417	36.0	1.142	29.0	0.984	25.0	82	PG 29	M40 x 1.5	M32 x 1.5
64453731	1.772	45.0	1.496	38.0	1.417	36.0	82	PG 36	M50 x 1.5	M40 x 1.5
64453751	2.205	56.0	1.890	48.0	1.575	40.0	82	PG 48	M63 x 1.5	M50 x 1.5
32 ft put-ups										
64453660	0.394	10.0	0.276	7.0	0.315	8.0	32	PG 7	M12 x 1.5	M10 x 1.5
64453670	0.551	14.0	0.394	10.0	0.394	10.0	32	PG 9	M16 x 1.5	M12 x 1.5
64453680	0.669	17.0	0.512	13.0	0.512	13.0	32	PG 11	M20 x 1.5	M16 x 1.5
64453690	0.748	19.0	0.591	15.0	0.591	15.0	32	PG 13	—	—
64453700	0.827	21.0	0.630	16.0	0.669	17.0	32	PG 16	M25 x 1.5	M20 x 1.5
64453710	1.063	27.0	0.827	21.0	0.787	20.0	32	PG 21	M32 x 1.5	M25 x 1.5
64453720	1.417	36.0	1.142	29.0	0.984	25.0	32	PG 29	M40 x 1.5	M32 x 1.5
64453730	1.772	45.0	1.496	38.0	1.417	36.0	32	PG 36	M50 x 1.5	M40 x 1.5
64453750	2.205	56.0	1.890	48.0	1.575	40.0	32	PG 48	M63 x 1.5	M50 x 1.5

If not otherwise specified, all values relating to the product are nominal values. Photographs are not to scale and are not true representations of the products in question.

SILVYN® AS-P

Flexible steel-reinforced PVC conduit



SILVYN® AS-P is designed with an interlocking spirally-wound metal armor surrounded with a PVC jacket. It is ideal for use in machine and equipment manufacturing with harsh and/or wet environments.

Application advantage

- Highly resistant to pressure, impact, and mechanical stress while providing superior flexing qualities
- Resistant to water, oil, and acids

Approvals



Complete the installation



SILVYN®
US/US-M
page 584



SILVYN®
MSK-M BRUSH
page 585

Technical data

Material:	galvanized steel with a silicone-free PVC spiral	Color:	gray
Temperature range:	-25°C to +80°C - short-term: up to +100°C	Approvals:	RoHS

Part number	Outer diameter		Inner diameter		Bend radius		Conduit coil put-ups	Thread size for fittings		
	in	mm	in	mm	in	mm		PG	SILVYN® US-M	SILVYN® USK-M
164 ft put-ups										
64400010	0.394	10.0	0.276	7.0	1.260	32.0	164	PG 7	M10 x 1.5	M12 x 1.5
64400020	0.551	14.0	0.394	10.0	1.575	40.0	164	PG 9	M12 x 1.5	M16 x 1.5
64400030	0.669	17.0	0.512	13.0	1.772	45.0	164	PG 11	M16 x 1.5	M20 x 1.5
64400040	0.748	19.0	0.591	15.0	2.047	52.0	164	PG 13	—	—
64400050	0.827	21.0	0.669	17.0	2.283	58.0	164	PG 16	M20 x 1.5	M25 x 1.5
64400060	1.063	27.0	0.866	22.0	2.835	72.0	164	PG 21	M25 x 1.5	M32 x 1.5
82 ft put-ups										
64400070	1.417	36.0	1.142	29.0	3.858	98.0	82	PG 29	M32 x 1.5	M40 x 1.5
64400080	1.772	45.0	1.496	38.0	4.646	118.0	82	PG 36	M40 x 1.5	M50 x 1.5
64400090	2.205	56.0	1.929	49.0	5.512	140.0	82	PG 48	M50 x 1.5	M63 x 1.5
32 ft put-ups										
64400100	0.394	10.0	0.276	7.0	1.260	32.0	32	PG 7	M10 x 1.5	M12 x 1.5
64400110	0.551	14.0	0.394	10.0	1.575	40.0	32	PG 9	M12 x 1.5	M16 x 1.5
64400120	0.669	17.0	0.512	13.0	1.772	45.0	32	PG 11	M16 x 1.5	M20 x 1.5
64400130	0.748	19.0	0.591	15.0	2.047	52.0	32	PG 13	—	—
64400140	0.827	21.0	0.669	17.0	2.283	58.0	32	PG 16	M20 x 1.5	M25 x 1.5
64400150	1.063	27.0	0.866	22.0	2.835	72.0	33	PG 21	M25 x 1.5	M32 x 1.5
64400160	1.417	36.0	1.142	29.0	3.858	98.0	32	PG 29	M32 x 1.5	M40 x 1.5
64400170	1.772	45.0	1.496	38.0	4.646	118.0	32	PG 36	M40 x 1.5	M50 x 1.5
64400180	2.205	56.0	1.929	49.0	5.512	140.0	32	PG 48	M50 x 1.5	M63 x 1.5

If not otherwise specified, all values relating to the product are nominal values. Photographs are not to scale and are not true representations of the products in question.

SILVYN® AS

Flexible steel-reinforced metal conduit



SILVYN® AS is designed with an interlocking spirally-wound metal armor. It is ideal for heavy mechanical stress.

Application advantage

- Highly resistant to pressure, impact, and mechanical stress while providing superior flexing qualities
- 32 ft put-ups available upon request

Approvals



Complete the installation



SILVYN®
US/US-M
page 584



SILVYN®
MSK-M BRUSH
page 585

Technical data

Material:	galvanized steel	Temperature range:	up to +220°C
		Approvals:	RoHS

Part number	Outer diameter		Inner diameter		Bend radius		Conduit coil put-ups ft	Thread size for fittings		
	in	mm	in	mm	in	mm		PG	SILVYN® US-M	SILVYN® USK-M
164 ft put-ups										
61802080	0.394	10.0	0.315	8.0	1.102	28.0	164	PG 7	M10 x 1.5	M12 x 1.5
61802090	0.551	14.0	0.433	11.0	1.339	34.0	164	PG 9	M12 x 1.5	M16 x 1.5
61802100	0.669	17.0	0.551	14.0	1.575	40.0	164	PG 11	M16 x 1.5	M20 x 1.5
61802110	0.748	19.0	0.630	16.0	1.772	45.0	164	PG 13	—	—
61802120	0.827	21.0	0.709	18.0	1.969	50.0	164	PG 16	M20 x 1.5	M25 x 1.5
61802130	1.063	27.0	0.906	23.0	2.480	63.0	164	PG 21	M25 x 1.5	M32 x 1.5
82 ft put-ups										
61802140	1.417	36.0	1.220	31.0	3.346	85.0	82	PG 29	M32 x 1.5	M40 x 1.5
61802150	1.772	45.0	1.575	40.0	3.937	100.0	82	PG 36	M40 x 1.5	M50 x 1.5
61802170	2.205	56.0	2.008	51.0	4.921	125.0	82	PG 48	M50 x 1.5	M63 x 1.5

SILVYN® EDU-AS

Flexible metal conduit for heavy mechanical stress



SILVYN® EDU-AS is designed with an interlocking spirally-wound metal armor surrounded by a galvanized steel wire braid. SILVYN® EDU-AS is recommended for use with the SILVYN® US brass connector to provide a secure locking system.

Application advantage

- Suitable for heavy mechanical stresses per DIN 49012
- High temperature resistance for exposure to extreme heat
- High tensile, twisting, and bending strength, while offering high flexibility

Approvals



Complete the installation



SILVYN®
US/US-M
page 584



SILVYN®
MSK-M BRUSH
page 585

Technical data

Material:	galvanized steel with a galvanized steel wire braid	Temperature range:	up to +220°C
		Approvals:	RoHS

Part number	Outer diameter		Inner diameter		Bend radius		Conduit coil put-ups ft	Thread size for fittings		
	in	mm	in	mm	in	mm		PG	SILVYN® US-M	SILVYN® USK-M
164 ft put-ups										
61802380	0.394	10.0	0.276	7.0	1.102	28.0	164	PG 7	M10 x 1.5	M12 x 1.5
61802390	0.551	14.0	0.394	10.0	1.339	34.0	164	PG 9	M12 x 1.5	M16 x 1.5
61802400	0.669	17.0	0.512	13.0	1.575	40.0	164	PG 11	M16 x 1.5	M20 x 1.5
61802410	0.748	19.0	0.591	15.0	1.772	45.0	164	PG 13	—	—
61802420	0.827	21.0	0.669	17.0	1.969	50.0	164	PG 16	M20 x 1.5	M25 x 1.5
61802430	1.063	27.0	0.866	22.0	2.480	63.0	164	PG 21	M25 x 1.5	M32 x 1.5
82 ft put-ups										
61802440	1.417	36.0	1.142	29.0	3.346	85.0	82	PG 29	M32 x 1.5	M40 x 1.5
61802450	1.772	45.0	1.496	38.0	3.937	100.0	82	PG 36	M40 x 1.5	M50 x 1.5
61802470	2.205	56.0	1.929	49.0	5.315	135.0	82	PG 48	M50 x 1.5	M63 x 1.5

If not otherwise specified, all values relating to the product are nominal values. Photographs are not to scale and are not true representations of the products in question.

SILVYN® HTDL

Liquid-tight metal conduit with PVC jacket



SILVYN® HTDL is a liquid-tight protective conduit with UL & CSA approvals. It is made of a single grooved metal conduit with PVC jacket. This design makes it suitable for applications in mechanical engineering, plant construction or transformer construction.

* Trade product, not LAPP product.

Application advantage

- Protects against liquids
- Robust with high tensile strength

Approvals



Complete the installation



SILVYN®
COMPACT
page 587

Technical data

Material:	galvanized steel with PVC jacket	Color:	black
Temperature range: - short-term:	-40°C to +105°C up to +120°C	Approvals:	NEC 501-4B RoHS

Part number	Outer diameter		Inner diameter		Bend radius		Conduit coil put-ups ft	Thread size for fittings		
	in	mm	in	mm	in	mm		NPT	PG	metric
61814190	0.701	17.8	0.496	12.6	3.346	85	196	NPT 1/2"	PG 13.5	M16 x 1.5
61814200	0.831	21.1	0.634	16.1	4.331	110	196	NPT 1/2"	PG 16	M20 x 1.5
61814210	1.039	26.4	0.831	21.1	5.512	140	147	NPT 3/4"	PG 21	M25 x 1.5
61814220	1.303	33.1	1.055	26.8	6.693	170	98	NPT 1"	PG 29	M32 x 1.5
61814230	1.646	41.8	1.394	35.4	8.465	215	49	NPT 1 1/4"	PG 36	M40 x 1.5
61814240	1.882	47.8	1.587	40.3	9.843	250	49	NPT 1 1/2"	PG 42	M50 x 1.5
61814250	2.358	59.9	2.031	51.6	11.811	300	49	NPT 2"	PG 48	M63 x 1.5

SILVYN® FG NM

Flexible liquid-tight conduit



SILVYN® FG NM is a flexible non-metallic conduit suitable for use in various industrial applications. It uses FDA-approved material and is ECOLAB® certified to be used in the food and beverage industry, especially for production and processing equipment of milk and meat products.

* Trade product, not LAPP product

Application advantage

- FDA-approved jacket material
- Protects against liquids
- Flame retardant

Approvals







Complete the installation



SILVYN®
HYGIENIC
page 588

Technical data

 Material:	special soft PVC sheath with hard PVC spiral	 Color:	blue
 Temperature range:	-20°C to +60°C - short-term: up to +80°C	 Approvals:	RoHS FDA CFR 21 NSF 51

Part number	Outer diameter		Inner diameter		Bend radius		Conduit coil put-ups ft	SILVYN® HYGIENIC metric thread
	in	mm	in	mm	in	mm		
55503370	0.701	17.8	0.496	12.6	2.758	70.0	98	55510700
55503371	0.831	21.1	0.630	16.0	3.940	100.0	98	55510701
55503372	1.040	26.4	0.827	21.0	5.122	130.0	98	55510702
55503373	1.304	33.1	1.044	26.5	7.092	180.0	98	55510703
55503374	1.647	41.8	1.383	35.1	8.865	225.0	49	55510704
55503375	1.883	47.8	1.588	40.3	10.047	255.0	49	55510705
55503376	2.360	59.9	2.033	51.6	12.214	310.0	49	55510706

ECOLAB® is a registered trademark of Ecolab, Inc.
If not otherwise specified, all values relating to the product are nominal values.
Photographs are not to scale and are not true representations of the products in question.

SILVYN® FG

Flexible steel-reinforced liquid-tight conduit



SILVYN® FG is a flexible steel-reinforced non-metallic conduit suitable for use in various industrial applications. It uses FDA-approved material and can be used in the food and beverage industry, especially for production and processing equipment of milk and meat products.

* Trade product, not LAPP product

Application advantage

- FDA-approved jacket material
- High crush resistance
- Protects against liquids
- Flame retardant

Approvals



Complete the installation



SILVYN®
HYGIENIC
page 588

Technical data

Material:	electrogalvanized strip-wound steel inner hose; special plastic sheath	Color:	white blue
Temperature range: - short-term:	-20°C to +60°C up to +80°C	Approvals:	RoHS FDA CFR 21 NSF 51

Part number		Outer diameter		Inner diameter		Bend radius		Conduit coil put-ups ft	SILVYN® HYGIENIC metric thread
white	blue	in	mm	in	mm	in	mm		
55503279	55503286	0.701	17.8	0.496	12.6	2.364	60.0	98	55510700
55503280	55503287	0.831	21.1	0.630	16.0	2.955	75.0	98	55510701
55503281	55503288	1.040	26.4	0.827	21.0	3.546	90.0	98	55510702
55503282	55503289	1.304	33.1	1.044	26.5	4.728	120.0	98	55510703
55503283	55503290	1.647	41.8	1.383	35.1	5.319	135.0	49	55510704
55503284	55503291	1.883	47.8	1.588	40.3	6.501	165.0	49	55510705
55503285	55503292	2.360	59.9	2.033	51.6	8.274	210.0	49	55510706

If not otherwise specified, all values relating to the product are nominal values.
Photographs are not to scale and are not true representations of the products in question.

SILVYN® FPAS
Flexible non-metallic conduit



SILVYN® FPAS is a flexible, non-metallic corrugated conduit suitable for use in various industrial applications. It is resistant to liquids, oils, and gases, and highly resistant to acids and solvents. Conduit is for use in controls, moving machine parts, motor and internal connections, and in industrial, medical, or electronic applications.

Application advantage

- Halogen-free, flame retardant, and self-extinguishing
- Durable, long-lasting conduit is rugged yet flexible

Approvals







Complete the installation



SILVYN®
FPAX-M
page 589

Technical data

 Material:	halogen-free polyamide 6	 Color:	black (RAL 9005) gray (RAL 7031)
 Temperature range:	-40°C to +120°C - static: - dynamic: -20°C to +100°C	 Approvals:	V-2 per UL 92 RoHS DNV-GL certified Lloyd's Register UL thermoplastic tubing

Part number		Outer diameter		Inner diameter		Bend radius		Conduit coil put-ups ft
black	gray	in	mm	in	mm	in	mm	
61754005	61754000	0.394	10.0	0.248	6.3	0.591	15.0	164
61754015	61754010	0.512	13.0	0.386	9.8	0.985	25.0	164
61754025	61754020	0.623	15.8	0.465	11.8	1.379	35.0	164
61754275	61754270	0.729	18.5	0.559	14.2	1.576	40.0	164
61737162	61737253	0.788	20.0	0.583	14.8	1.773	45.0	164
61754035	61754030	0.835	21.2	0.658	16.7	1.773	45.0	164
61737164	61737163	0.985	25.0	0.753	19.1	1.970	50.0	164
61754045	61754040	1.123	28.5	0.898	22.8	1.970	50.0	164
61754055	61754050	1.359	34.5	1.107	28.1	2.364	60.0	82
61754065	61754060	1.675	42.5	1.399	35.5	2.758	70.0	82
61754075	61754070	2.147	54.5	1.860	47.2	3.152	80.0	82
61754305	61754300	2.648	67.2	2.218	56.3	5.122	130.0	33

If not otherwise specified, all values relating to the product are nominal values. Photographs are not to scale and are not true representations of the products in question.

SILVYN® KLIK NPT/KLIK PG/KLIK-M

Straight connectors for SILVYN® RILL PA 6 & PA 12 conduit

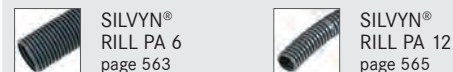
SILVYN® KLIK is available with NPT, PG & metric threads. Use this straight conduit gland to create a quick, secure connection with SILVYN® RILL conduit.



Approvals



Complete the installation



Technical data

Material:	silicone-free polyamide	Color:	black or gray
Temperature range:	-40°C to +115°C	IP Protection:	IP68 IP69 acc. to DIN 40050 T.9

Part number		Thread	Conduit outer diameter		Thread length		Pack size	SILVYN® RILL PA 6		SILVYN® RILL PA 12	
black	gray		in	mm	in	mm		black	gray	black	gray
NPT thread											
61800705	—	NPT ¼"	0.394	10.0	0.453	11.5	50	61746935	61746939	61815105	61815100
61800715	—	NPT ⅜"	0.512	13.0	0.472	12.0	50	61746945	61746940	61815115	61815110
61800725*	—	NPT ½"	0.622	15.8	0.472	12.0	50	61746955	61746950	61815125	61815120
61800745	—	NPT ½"	0.835	21.2	0.512	13.0	50	61746965	61746960	61815135	61815130
61800755*	—	NPT ¾"	1.122	28.5	0.551	14.0	25	61746975	61746970	61815145	61815140
61800765*	—	NPT 1"	1.358	34.5	0.630	16.0	25	61746985	61746980	61815155	61815150
61800775	—	NPT 1¼"	1.673	42.5	0.709	18.0	25	61746995	61746990	61815165	61815160
61800785	—	NPT 1½"	2.146	54.5	0.827	21.0	10	61747005	61747000	61815175	61815170
PG thread											
61800865	61800860	PG 7	0.394	10.0	0.394	10.0	50	61746935	61746939	61815105	61815100
61800875	61800870	PG 9	0.512	13.0	0.394	10.0	50	61746945	61746940	61815115	61815110
61800885	61800880	PG 11	0.622	15.8	0.394	10.0	50	61746955	61746950	61815125	61815120
61800855	61800850	PG 13	0.717	18.2	0.433	11.0	50	61747015	61747010	61815185	61815180
61800895	61800890	PG 16	0.835	21.2	0.472	12.0	50	61746965	61746960	61815135	61815130
61800905	61800900	PG 21	1.122	28.5	0.472	12.0	25	61746975	61746970	61815145	61815140
61800915	61800910	PG 29	1.358	34.5	0.472	12.0	25	61746985	61746980	61815155	61815150
61800925	61800920	PG 36	1.673	42.5	0.472	12.0	25	61746995	61745990	61815165	61815160
61800935	61800930	PG 48	2.146	54.5	0.591	15.0	10	61747005	61747000	61815175	61815170
Metric thread											
55501005	55501000	M10 x 1.0	0.394	10.0	0.472	12.0	50	61746935	61746939	61815105	61815100
55501015	55501010	M12 x 1.5	0.512	13.0	0.472	12.0	50	61746945	61746940	61815115	61815110
55501025	55501020	M16 x 1.5/1	0.512	13.0	0.472	12.0	50	61746945	61746940	61815115	61815110
55501035	55501030	M16 x 1.5/2	0.622	15.8	0.472	12.0	50	61746955	61746950	61815125	61815120
55501045	55501040	M20 x 1.5/1	0.622	15.8	0.512	13.0	50	61746950	61746950	61815125	61815120
55501055	55501050	M20 x 1.5/2	0.835	21.2	0.512	13.0	50	61746965	61746960	61815135	61815130
55501065	55501060	M25 x 1.5	1.122	28.5	0.512	13.0	25	61746975	61746970	61815145	61815140
55501075	55501070	M32 x 1.5	1.358	34.5	0.591	15.0	25	61746985	61746980	61815155	61815150
55501085	55501080	M40 x 1.5	1.673	42.5	0.591	15.0	25	61746995	61746990	61815165	61815160
55501095	55501090	M50 x 1.5	2.146	54.5	0.602	15.3	10	61747005	61747000	61815175	61815170
55500995	55500990	M63 x 1.5	2.146	54.5	0.629	16.0	10	61747005	61747000	61815175	61815170

* CSA approved

If not otherwise specified, all values relating to the product are nominal values. Photographs are not to scale and are not true representations of the products in question.

SILVYN® KLICK 90° N/KLICK 90° P/KLICK 90° M

Angled connectors for SILVYN® RILL PA 6 & PA 12 conduit



SILVYN® KLICK-90° is available with NPT, PG & metric threads. Use this 90° angled conduit gland to create a quick, secure connection with SILVYN® RILL conduit.



Approvals



Complete the installation



SILVYN®
RILL PA 6
page 563



SILVYN®
RILL PA 12
page 565

Technical data

Material:	silicone-free polyamide	Color:	black or gray
Temperature range:	-40°C to +115°C	IP Protection:	IP67 IP69 acc. to DIN 40050 T.9

Part number		Thread	Conduit outer diameter		Thread length		Pack size	SILVYN® RILL PA 6		SILVYN® RILL PA 12	
black	gray		in	mm	in	mm		black	gray	black	gray
NPT thread											
61800015	—	NPT ¼"	0.394	10.0	0.394	10.0	50	61746935	61746939	61815105	61815100
61800025	—	NPT ¼"	0.512	13.0	0.414	10.5	50	61746945	61746940	61815115	61815110
61800035*	—	NPT ⅜"	0.622	15.8	0.472	12.0	50	61746955	61746950	61815125	61815120
61800045	—	NPT ½"	0.835	21.2	0.512	13.0	50	61746965	61746960	61815135	61815130
61800055*	—	NPT ¾"	1.122	28.5	0.551	14.0	25	61746975	61746970	61815145	61815140
61800065*	—	NPT 1"	1.358	34.5	0.630	16.0	10	61746985	61746980	61815155	61815150
61800075	—	NPT 1¼"	1.673	42.5	0.709	18.0	10	61746995	61746990	61815165	61815160
61800084	—	NPT 1½"	2.146	54.5	0.709	18.0	10	61747005	61747000	61815175	61815170
PG thread											
61801025	61801020	PG 9	0.512	13.0	0.394	10.0	50	61746945	61746940	61815115	61815110
61801035	61801030	PG 11	0.622	15.8	0.394	10.0	50	61746955	61746950	61815125	61815120
56000105	56000100	PG 13	0.728	18.5	0.433	11.0	50	61747015	61747010	61815185	61815180
61801045	61801040	PG 16	0.835	21.2	0.472	12.0	50	61746965	61746960	61815135	61815130
61801055	61801050	PG 21	1.122	28.5	0.472	12.0	25	61746975	61746970	61815145	61815140
61801065	61801060	PG 29	1.358	34.5	0.472	12.0	10	61746985	61746980	61815155	61815150
61801075	61801061	PG 36	1.673	42.5	0.551	14.0	10	61746995	61746990	61747085	61714200
61801085	61801062	PG 48	2.146	54.5	0.551	14.0	5	61747005	61747000	61747095	61714210
Metric thread											
55501115	55501110	M10 x 1.0	0.394	10.0	0.472	12.0	50	61746935	61746939	61815105	61815100
55501125	55501120	M12 x 1.5	0.512	13.0	0.472	12.0	50	61746945	61746940	61815115	61815110
55501145	55501140	M16 x 1.5	0.622	15.8	0.472	12.0	50	61746955	61746950	61815125	61815120
55501165	55501160	M20 x 1.5	0.835	21.2	0.512	13.0	50	61746965	61746960	61815135	61815130
55501185	55501180	M25 x 1.5	1.122	28.5	0.512	13.0	25	61746975	61746970	61815145	61815140
55501205	55501200	M32 x 1.5	1.358	34.5	0.591	15.0	10	61746985	61746980	61815155	61815150
55501225	55501220	M40 x 1.5	1.673	42.5	0.591	15.0	10	61746995	61746990	61815165	61815160
55501245	55501240	M50 x 1.5	2.146	54.5	0.630	16.0	5	61747005	61747000	61815175	61815170
55501255	55501250	M63 x 1.5	2.146	54.5	0.630	16.0	5	61747005	61747000	61815175	61815170

* CSA approved

SILVYN® SPLIT COV/SPLIT COS

Support assemblies for SILVYN® SPLIT conduit

SILVYN® SPLIT COV



SILVYN® SPLIT COS



SILVYN® SPLIT COV is a fast and easy support assembly designed specifically for the SILVYN® SPLIT. SILVYN® SPLIT COS is designed to hold SILVYN® SPLIT in place. It has high tensile strength and no loose parts. Both assemblies can be used in areas where cables and wires need to be protected after installation.

Approvals



Complete the installation



SILVYN®
SPLIT
page 566

Technical data

Material:	halogen-free polyamide	Color:	black (RAL 9005)
Temperature range:	-40°C to +120°C		

SILVYN® SPLIT COV

Part number	Thread	Min. conduit outer diameter		Max. conduit outer diameter		Pack size	SILVYN® SPLIT		
		in	mm	in	mm		PA 6	PP	PP UV
With locknut									
61806760	PG 9	0.351	8.9	0.536	13.6	100	61806620	61806625	61806110
61806770	PG 13.5	0.508	12.9	0.737	18.7	100	61806630	61806635	61806130
61806780	PG 21	0.780	19.8	1.020	25.9	50	61806640	61806645	61806150
61806790	PG 29	0.934	23.7	1.233	31.3	50	61806650	61806655	61806160
61806800	PG 29	1.249	31.7	1.651	41.9	25	61806650	61806655	61806160
–	PG 50	1.698	43.1	2.135	54.2	25	61806650	61806655	61806160
Without locknut									
61806680	M16 x 1.5	0.351	8.9	0.536	13.6	100	61806620	61806625	61806110
61806681	M20 x 1.5	0.508	12.9	0.737	18.7	100	61806630	61806635	61806130
61806682	M25 x 1.5	0.780	19.8	1.020	25.9	50	61806640	61806645	61806150
61806683	M32 x 1.5	0.934	23.7	1.233	31.3	50	61806650	61806655	61806160
61806684	M40 x 1.5	1.249	31.7	1.651	41.9	25	61806660	61806665	61806180
61806685	M50 x 1.5	1.698	43.1	2.135	54.2	25	61806670	61806675	61806190

SILVYN® SPLIT COS

Part number	Min. conduit outer diameter		Max. conduit outer diameter		Pack size	SILVYN® SPLIT		
	in	mm	in	mm		PA 6	PP	PP UV
61806690	0.351	8.9	0.536	13.6	100	61806620	61806625	61806110
61806700	0.508	12.9	0.737	18.7	100	61806630	61806635	61806130
61806710	0.780	19.8	1.020	25.9	50	61806640	61806645	61806150
61806720	0.934	23.7	1.233	31.3	50	61806650	61806655	61806160
61806730	1.249	31.7	1.651	41.9	20	61806660	61806665	61806180
61806740	1.698	43.1	2.135	54.2	20	61806670	61806675	61806190

If not otherwise specified, all values relating to the product are nominal values.
Photographs are not to scale and are not true representations of the products in question.

for current information see: www.lappusa.com • www.lappcanada.com

SILVYN® MPC/MPC-M

Straight connectors for SILVYN® EL/ELU/ELÖ/ELT conduit



SILVYN® MPC is a straight conduit connector especially designed for use with the SILVYN® EL/ELU/ELÖ/ELT conduit to create a tight and secure seal. SILVYN® MPC is available in PG and metric threads.

Approvals



Complete the installation



SILVYN® EL/
ELU/ELÖ/ELT
page 567

Technical data

Material:	halogen-free polyamide 66	Color:	black (RAL 9005) gray (RAL 7001)
Temperature range:	-40°C to +120°C	IP Protection:	IP65

Part number		Thread	Conduit inner diameter		Conduit outer diameter		Pack size	SILVYN® EL	SILVYN® ELU	SILVYN® ELÖ	SILVYN® ELT
black	gray		in	mm	in	mm					
PG thread											
55502470	55502496	PG 9	0.394	10.0	0.579	14.7	10	61747360	61751790	61751610	61751700
55502471	55502497	PG 11	0.472	12.0	0.654	16.6	10	61747370	61751791	61751620	61751710
55502472	55502498	PG 13/1	0.472	12.0	0.654	16.6	10	61747370	61751791	61751620	61751710
55502494	55502499	PG 13/2	0.630	16.0	0.815	20.7	10	61747380	61751792	61751630	61751720
55502473	55502451	PG 16	0.630	16.0	0.815	20.7	10	61747380	61751792	61751630	61751720
55502474	55502452	PG 21	0.866	22.0	1.091	27.7	10	61747390	61751793	61751640	61751730
55502476	55502453	PG 29/1	0.984	25.0	1.205	30.6	10	61747400	61751794	61751650	61751740
55502495	55502454	PG 29/2	1.102	28.0	1.319	33.5	10	61747410	61751795	61751660	61751750
55502477	55502455	PG 36	1.378	35.0	1.614	41.0	2	61747420	61751796	61751670	61751760
55502478	55502456	PG 42	1.575	40.0	1.827	46.4	2	61747430	61751797	61751680	61751770
55502479	55502457	PG 48	1.969	50.0	2.252	57.2	2	61747440	61751798	61751690	61751780
Metric thread											
55502460	55502441	M16 x 1.5/1	0.394	10.0	0.579	14.7	10	61747360	61751790	61751610	61751700
55502461	55502442	M16 x 1.5/2	0.472	12.0	0.654	16.6	10	61747370	61751791	61751620	61751710
55502462	55502443	M20 x 1.5/1	0.472	12.0	0.654	16.6	10	61747370	61751791	61751620	61751710
55502463	55502444	M20 x 1.5/2	0.630	16.0	0.815	20.7	10	61747380	61751792	61751630	61751720
55502464	55502445	M25 x 1.5	0.866	22.0	1.091	27.7	10	61747390	61751793	61751640	61751730
55502465	55502446	M32 x 1.5/1	0.984	25.0	1.205	30.6	10	61747400	61751794	61751650	61751740
55502469	55502447	M32 x 1.5/2	1.102	28.0	1.319	33.5	10	61747410	61751795	61751660	61751750
55502466	55502448	M40 x 1.5	1.378	35.0	1.614	41.0	2	61747420	61751796	61751670	61751760
55502467	55502449	M50 x 1.5	1.575	40.0	1.827	46.4	2	61747430	61751797	61751680	61751770
55502468	55502439	M63 x 1.5	1.969	50.0	2.252	57.2	1	61747440	61751798	61751690	61751780

If not otherwise specified, all values relating to the product are nominal values. Photographs are not to scale and are not true representations of the products in question.

SILVYN® MPC 90°/MPC 90° M

Angled connectors for SILVYN® EL/ELU/ELÖ/ELT conduit

SILVYN® MPC is an angle connector designed especially for the SILVYN® EL/ELU/ELÖ/ELT conduit to create a tight, secure seal. SILVYN® MPC is available in PG and metric threads.



Approvals



Complete the installation



SILVYN® EL/
ELU/ELÖ/ELT
page 567

Technical data

Material:	halogen-free polyamide 66	Color:	black (RAL 9005) gray (RAL 7001)
Temperature range:	-40°C to +120°C	IP Protection:	IP65

Part number		Thread	Conduit inner diameter		Conduit outer diameter		Pack size	SILVYN® EL	SILVYN® ELU	SILVYN® ELÖ	SILVYN® ELT
black	gray		in	mm	in	mm					
PG thread											
55502486	55502370	PG 11	0.472	12.0	0.654	16.6	10	61747370	61751791	61751620	61751710
55502487	55502371	PG 13	0.472	12.0	0.654	16.6	10	61747370	61751791	61751620	61751710
55502488	55502372	PG 16	0.630	16.0	0.815	20.7	10	61747380	61751792	61751630	61751720
55502489	55502373	PG 21	0.866	22.0	1.091	27.7	10	61747390	61751793	61751640	61751730
55502490	55502374	PG 29	1.102	28.0	1.319	33.5	10	61747410	61751795	61751660	61751750
55502493	55502375	PG 36	1.378	35.0	1.614	41.0	2	61747420	61751796	61751670	61751760
Metric thread											
55502480	55502458	M16 x 1.5	0.472	12.0	0.654	16.6	10	61747370	61751791	61751620	61751710
55502481	55502459	M20 x 1.5/1	0.472	12.0	0.654	16.6	10	61747370	61751791	61751620	61751710
55502482	55502366	M20 x 1.5/2	0.630	16.0	0.815	20.7	10	61747380	61751792	61751630	61751720
55502483	55502367	M25 x 1.5	0.866	22.0	1.091	27.7	10	61747390	61751793	61751640	61751730
55502484	55502368	M32 x 1.5	1.102	28.0	1.319	33.5	10	61747410	61751795	61751660	61751750
55502485	55502369	M40 x 1.5	1.378	35.0	1.614	41.0	2	61747420	61751796	61751670	61751760

SILVYN® LKI/LKI-M

Connectors for SILVYN® FD-PU & SILVYN® FPS conduit



SILVYN® LKI is a swivel connector designed to allow the conduit to rotate freely without damage to the conduit or the connection. It is tension and vibration resistant, providing a high quality connection between the protective conduit and the machine. SILVYN® LKI is for use with SILVYN® FPS and FD-PU conduits.

Complete the installation



SKINTOP®
GMP locknuts
page 541

Approvals



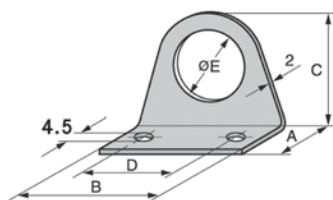
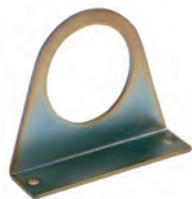
Technical data

Material:	polypropylene	Temperature range:	-10°C to +110°C
Locknuts:	add SKINTOP® GMP-GL, page 541	Color:	gray
		IP Protection:	IP54

Part number	Thread	Conduit outer diameter		Thread length		Pack size	SILVYN® FPS	SILVYN® FD-PU
		in	mm	in	mm			
PG thread								
55000000	PG 7	0.394	10.0	0.394	10.0	50	61711550	64453662
55000010	PG 9	0.551	14.0	0.394	10.0	50	61711590	64453672
55000020	PG 11	0.669	17.0	0.394	10.0	50	61711630	64453682
55000030	PG 13	0.748	19.0	0.394	10.0	50	61711670	64453692
55000040	PG 16	0.827	21.0	0.433	11.0	50	61711710	64453702
55000050	PG 21	1.063	27.0	0.433	11.0	25	61711750	64453712
55000060	PG 29	1.417	36.0	0.472	12.0	25	61711790	64453721
55000070	PG 36	1.772	45.0	0.472	12.0	25	61711830	64453731
55000090	PG 48	2.205	56.0	0.591	15.0	10	61711910	64453751
Metric thread								
55501400	M12 x 1.5	0.394	10.0	0.394	10.0	50	61711550	64453612
55501410	M16 x 1.5	0.551	14.0	0.394	10.0	50	61711590	64453672
55501420	M20 x 1.5	0.669	17.0	0.394	10.0	50	61711630	64453682
55501430	M25 x 1.5	0.827	21.0	0.433	11.0	50	61711710	64453702
55501440	M32 x 1.5	1.063	27.0	0.472	12.0	25	61711750	64453712
55501450	M40 x 1.5	1.417	36.0	0.472	12.0	25	61711790	64453721
55501460	M50 x 1.5	1.772	45.0	0.472	12.0	25	61711830	64453731
55501470	M63 x 1.5	2.205	56.0	0.591	15.0	10	61711910	64453751

SILVYN® BW/BW-M

Mounting brackets for SILVYN® LKI/LKI-M connectors



All dimensions are in mm.

SILVYN® BW is a special mounting bracket to be used with a SILVYN® LKI PG connector to provide the proper sealing protection. The SILVYN® BW-M bracket is designed with metric threads.

Technical data

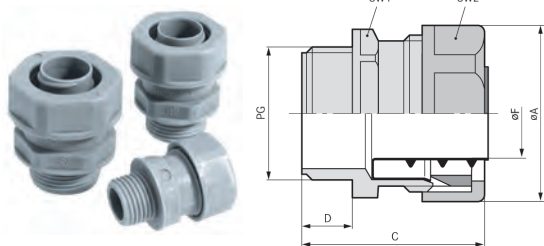
Material:	passivated stainless steel
------------------	----------------------------

Part number	Thread	A		B		C		D		ØE		Pack size
		in	mm	in	mm	in	mm	in	mm	in	mm	
PG thread												
55000540	PG 16	0.79	20.0	1.97	50.0	1.50	38.0	1.58	40.0	0.91	23.0	25
55000550	PG 21	0.79	20.0	2.36	60.0	1.85	47.0	1.97	50.0	1.14	29.0	25
55000560	PG 29	0.79	20.0	2.76	70.0	2.24	57.0	2.36	60.0	1.48	37.5	25
Metric thread												
55000531	M16 x 1.5	0.79	20.0	1.97	50.0	1.30	33.2	1.58	40.0	0.67	17.0	25
55000541	M20 x 1.5	0.79	20.0	1.97	50.0	1.50	38.0	1.58	40.0	0.83	21.0	25
55000551	M25 x 1.5	0.79	20.0	2.36	60.0	1.85	46.9	1.97	50.0	1.02	26.0	25
55000561	M32 x 1.5	0.79	20.0	2.76	70.0	2.24	56.9	2.36	60.0	1.30	33.0	25
55000571	M40 x 1.5	0.79	20.0	3.15	80.0	2.64	67.0	2.76	70.0	1.61	41.0	25
55000572	M50 x 1.5	0.79	20.0	3.54	90.0	3.08	78.4	3.15	80.0	2.01	51.0	25

If not otherwise specified, all values relating to the product are nominal values. Photographs are not to scale and are not true representations of the products in question.

SILVYN® USK/USK-M

Connectors for SILVYN® FD-PU & SILVYN® FPS conduit



SILVYN® USK/USK-M is specially designed to lock in SILVYN® FPS and FD-PU conduit and prevent pullouts and twists that can be encountered during continuous flexing applications. It is tension and vibration resistant, providing a high quality connection between the conduit and the machine.

Approvals



Complete the installation



SILVYN® FPS
page 568



SILVYN®
FD-PU
page 569



SKINTOP®
GMP locknuts
page 541

Technical data

Material:	polypropylene	Temperature range:	-10°C to +110°C
Locknuts:	add SKINTOP® GMP-GL, page 541	Color:	gray
		IP Protection:	IP54

Part number	Thread	Conduit outer diameter		Thread length		Pack size	SILVYN® FPS	SILVYN® FD-PU
		in	mm	in	mm			
PG thread								
52005810	PG 7	0.394	10.0	0.394	10.0	50	61711550	64453662
52005820	PG 9	0.551	14.0	0.394	10.0	50	61711590	64453672
52005830	PG 11	0.669	17.0	0.394	10.0	50	61711630	64453682
52005840	PG 13	0.748	19.0	0.394	10.0	50	61711670	64453692
52005850	PG 16	0.827	21.0	0.433	11.0	50	61711710	64453702
52005860	PG 21	1.063	27.0	0.433	11.0	25	61711750	64453712
52005870	PG 29	1.417	36.0	0.472	12.0	25	61711790	64453721
52005880	PG 36	1.772	45.0	0.472	12.0	25	61711830	64453731
52005900	PG 48	2.205	56.0	0.591	15.0	10	61711910	64453751
Metric thread								
55501300	M10 x 1.0	0.394	10.0	0.394	10.0	50	61711550	64453612
55501310	M12 x 1.5	0.551	14.0	0.472	12.0	50	61711590	64453672
55501320	M16 x 1.5	0.669	17.0	0.472	12.0	50	61711630	64453682
55501330	M20 x 1.5	0.827	21.0	0.512	13.0	50	61711710	64453702
55501340	M25 x 1.5	1.063	27.0	0.512	13.0	25	61711750	64453712
55501350	M32 x 1.5	1.417	36.0	0.591	15.0	25	61711790	64453721
55501360	M40 x 1.5	1.772	45.0	0.591	15.0	25	61711830	64453731
55501370	M50 x 1.5	2.205	56.0	0.630	16.0	10	61711910	64453751

If not otherwise specified, all values relating to the product are nominal values. Photographs are not to scale and are not true representations of the products in question.

SILVYN® US/US-M

Brass connectors for SILVYN® AS, AS-P, EDU-AS, FPS & FD-PU conduit



Approvals



SILVYN® US is a high-quality brass conduit connector designed to ensure a vibration- and tension-resistant connection for applications with high mechanical stress. The inner sealing is made of TPE to create a durable and high-temperature seal. The SILVYN® US MS-DR brass sealing ring should be used in place of the TPE sealing ring when SILVYN® AS & EDU-AS are being used in applications with temperatures above 100°C.

Complete the installation



Technical data

Material:

- body & cap nut: nickel-plated brass
- inner sleeve: nickel-plated brass
- for AS: brass
- for AS-P & EDU-AS: brass
- for FPS & FD-PU: plastic
- sealing ring: TPE

Temperature range:

- for AS, AS-P & EDU-AS: -40°C to +125°C
- for FPS & FD-PU: -10°C to +110°C

IP Protection:

- with AS & EDU-AS: IP40
- with AS-P: IP65
- with FPS & FD-PU: IP54

Locknuts: add SKINDICHT® SM, page 542

Part number				Thread	Conduit outer diameter		Thread length		Wrench size		Pack size
for SILVYN® AS	for SILVYN® AS-P	for SILVYN® EDU-AS	for SILVYN® FPS & FD-PU		in	mm	in	mm	in	mm	
PG thread											
55502661	55502671	55502680	55502651	PG 7	0.394	10.0	0.276	7.0	0.591-0.669	15.0-17.0	50
55502662	55502672	55502689	55502652	PG 9	0.551	14.0	0.276	7.0	0.748-0.827	19.0-21.0	50
55502663	55502673	55502682	55502653	PG 11	0.669	17.0	0.276	7.0	0.906-0.984	23.0-25.0	50
55502664	55502674	55502683	55502654	PG 13	0.748	19.0	0.276	7.0	0.984-1.063	25.0-27.0	50
55502665	55502675	55502684	55502655	PG 16	0.827	21.0	0.276	7.0	1.063-1.142	27.0-29.0	50
55502666	55502676	55502685	55502656	PG 21	1.063	27.0	0.394	10.0	1.339-1.417	34.0-36.0	25
55502667	55502677	55502694	55502657	PG 29	1.417	36.0	0.394	10.0	1.693-1.772	43.0-45.0	25
55502668	55502678	55502687	55502658	PG 36	1.772	45.0	0.394	10.0	2.047-2.126	52.0-54.0	20
55502669	55502679	55502688	55502659	PG 48	2.205	56.0	0.394	10.0	2.480-2.598	63.0-66.0	10
Metric thread											
55502611	55502621	55502631	55502601	M10 x 1.0	0.394	10.0	0.394	10.0	0.591-0.669	15.0-17.0	50
55502612	55502622	55502633	55502602	M12 x 1.5	0.551	14.0	0.394	10.0	0.748-0.827	19.0-21.0	50
55502613	55502623	55502634	55502603	M16 x 1.5	0.669	17.0	0.394	10.0	0.906-0.984	23.0-25.0	50
55502614	55502624	55502636	55502604	M20 x 1.5	0.827	21.0	0.394	10.0	1.063-1.142	27.0-29.0	50
55502615	55502625	55502646	55502605	M25 x 1.5	1.063	27.0	0.433	11.0	1.339-1.417	34.0-36.0	25
55502616	55502626	55502638	55502606	M32 x 1.5	1.417	36.0	0.512	13.0	1.693-1.772	43.0-45.0	25
55502617	55502627	55502639	55502607	M40 x 1.5	1.772	45.0	0.512	13.0	2.047-2.126	52.0-54.0	20
55502618	55502628	55502641	55502608	M50 x 1.5	2.205	56.0	0.551	14.0	2.480-2.598	63.0-66.0	10

If not otherwise specified, all values relating to the product are nominal values. Photographs are not to scale and are not true representations of the products in question.

SILVYN® MSK-M US/MSK-M BRUSH

Brass connector and strain relief for EMC applications

NEW

SILVYN® MSK-M US



SILVYN® MSK-M BRUSH



SILVYN® MSK-M US is a multi-conduit cable gland. It is designed for applications where cable and conduit must be sealed and strain relieved at the same time. SILVYN® MSK-M BRUSH is a combination grounding connector and conduit strain relief. It is most commonly used in EMC-sensitive environments.

Complete the installation

SILVYN® AS
page 571SILVYN® AS-P
page 570SILVYN® EDU-AS
page 572

Approvals



Technical data

Material:

- body: nickel-plated brass
- connector seal: CR/NBR
- sealing ring: TPE
- brush: brass (MSK-M BRUSH only)



Temperature range: -30 °C to +100 °C



- IP Protection:
- cable: IP68
 - with AS & EDU-AS: IP40
 - with AS-P: IP65

SILVYN® MSK-M US

Part number		Thread	Pack size	SILVYN® AS	SILVYN® AS-P	SILVYN® EDU-AS
for SILVYN® AS	for SILVYN® AS-P & EDU-AS					
55506080	55506090	M12 x 1.5	5	61802080	64400010	61802380
55506081	55506091	M16 x 1.5	5	61802090	64400020	61802390
55506082	55506092	M20 x 1.5	5	61802100	64400030	61802400
55506083	55506093	M25 x 1.5	5	61802120	64400050	61802420
55506084	55506094	M32 x 1.5	5	61802130	64400060	61802430
55506085	55506095	M40 x 1.5	1	61802140	64400070	61802440
55506086	55506096	M50 x 1.5	1	61802150	64400080	61802450
55506087	55506097	M63 x 1.5	1	61802170	64400090	61802470

SILVYN® MSK-M BRUSH

Part number		Thread	Pack size	SILVYN® AS	SILVYN® AS-P	SILVYN® EDU-AS
for SILVYN® AS	for SILVYN® AS-P & EDU-AS					
55506020	55506025	M25 x 1.5	10	61802120	64400050	61802420
55506021	55506026	M32 x 1.5	1	61802130	64400060	61802430
55506022	55506027	M40 x 1.5	1	61802140	64400070	61802440
55506023	55506028	M50 x 1.5	1	61802150	64400080	61802450
55506024	55506029	M63 x 1.5	1	61802170	64400090	61802470

SILVYN® MSK-M ATEX/MSK-M ATEX BRUSH

Brass connector and strain relief for hazardous EMC environments

SILVYN® MSK-M ATEX

SILVYN® MSK-M ATEX BRUSH



SILVYN® MSK-M ATEX is a combination connector and conduit strain relief for hazardous environments. SILVYN® MSK-M ATEX BRUSH includes grounding for EMC applications. Both connectors are Equipment Group II, Category 2G + 1D

Complete the installation



SILVYN® AS
page 571



SILVYN® EDU-AS
page 572

Approvals



Technical data

Material:
 - body: nickel-plated brass
 - connector seal: CR/NBR
 - tube seal: TPE
 - brush: brass (MSK-M ATEX BRUSH only)

Temperature range: -30°C to +90°C

IP Protection:
 - cable: IP68
 - with AS & EDU-AS: IP40

SILVYN® MSK-M ATEX

Part number		Thread	Conduit outer diameter		Pack size	SILVYN® AS	SILVYN® EDU-AS
for SILVYN® AS	for SILVYN® EDU-AS		in	mm			
55506010	55506018	M12 x 1.5	0.394	10.0	5	61802080	61802380
55506011	55506019	M16 x 1.5	0.552	14.0	5	61802090	61802390
55506012	55506036	M20 x 1.5	0.670	17.0	5	61802100	61802400
55506013	55506037	M25 x 1.5	0.827	21.0	5	61802120	61802420
55506014	55506038	M32 x 1.5	1.064	27.0	5	61802130	61802430
55506015	55506039	M40 x 1.5	1.418	36.0	1	61802140	61802440
55506016	55506040	M50 x 1.5	1.773	45.0	1	61802150	61802450
55506017	55506041	M63 x 1.5	2.206	56.0	1	61802170	61802470

SILVYN® MSK-M ATEX BRUSH

Part number		Thread	Conduit outer diameter		Pack size	SILVYN® AS	SILVYN® EDU-AS
for SILVYN® AS	for SILVYN® EDU-AS		in	mm			
55506042	55506031	M25 x 1.5	0.827	21.0	10	61802120	61802420
55506043	55506032	M32 x 1.5	1.064	27.0	1	61802130	61802430
55506044	55506033	M40 x 1.5	1.418	36.0	1	61802140	61802440
55506045	55506034	M50 x 1.5	1.773	45.0	1	61802150	61802450
55506030	55506035	M63 x 1.5	2.206	56.0	1	61802170	61802470

If not otherwise specified, all values relating to the product are nominal values. Photographs are not to scale and are not true representations of the products in question.

SILVYN® COMPACT

Brass connector for SILVYN® HTDL conduit



Complete the installation

SILVYN® HTDL
page 573SKINDICHT®
SM locknuts
page 542

Approvals



SILVYN® COMPACT is a high-quality brass conduit connector for SILVYN® HTDL designed to ensure a vibration- and tension-resistant connection for applications with high mechanical stress. It is a conduit gland that provides optimum assembly conditions due to the compact dimensions. In combination with liquid-tight conduits it forms an easy to install system with high protection degree.

Technical data

**Material:**

- body & cap nut: nickel-plated brass
- inner sleeve: galvanized steel
- seal: polyamide
- O-ring: NBR

**Temperature range:**

-45 °C to +105 °C

**IP Protection:**

IP66
IP67
NEMA 4X

**Locknuts:**

add SKINDICHT® SM, page 542

	Part number		Thread	Conduit outer diameter		Pack size	SILVYN® HTDL
	straight	45° angled		90° angled	in		
NPT thread							
61803832	—	61803839	NPT 1/2"	0.701	17.8	10	61814190
61803833	—	61803840	NPT 1/2"	0.831	21.1	10	61814200
61803834	—	61803841	NPT 3/4"	1.039	26.4	5	61814210
61803835	—	61803842	NPT 1"	1.303	33.1	5	61814220
61803836	—	61803843	NPT 1 1/4"	1.646	41.8	2	61814230
61803837	—	61803844	NPT 1 1/2"	1.882	47.8	2	61814240
61803838	—	61803845	NPT 2"	2.358	59.9	2	61814250
PG thread							
61803816	—	61803824	PG 11	0.701	17.8	10	61814190
61803817	—	61803825	PG 13.5	0.701	17.8	10	61814190
61803818	—	61803826	PG 16	0.831	21.1	10	61814200
61803819	—	61803827	PG 21	1.039	26.4	5	61814210
61803820	—	61803828	PG 29	1.303	33.1	5	61814220
61803821	—	61803829	PG 36	1.646	41.8	2	61814230
61803822	—	61803830	PG 42	1.882	47.8	2	61814240
61803823	—	61803831	PG 48	2.358	59.9	2	61814250
Metric thread							
61803800	61803850	61803808	M16 x 1.5	0.701	17.8	10	61814190
61803801	61803851	61803809	M20 x 1.5	0.701	17.8	10	61814190
61803802	61803852	61803810	M20 x 1.5	0.831	21.1	10	61814200
61803803	61803853	61803811	M25 x 1.5	1.039	26.4	5	61814210
61803804	61803854	61803812	M32 x 1.5	1.303	33.1	5	61814220
61803805	—	61803813	M40 x 1.5	1.646	41.8	2	61814230
61803806	—	61803814	M50 x 1.5	1.882	47.8	2	61814240
61803807	—	61803815	M63 x 1.5	2.358	59.9	2	61814250

If not otherwise specified, all values relating to the product are nominal values.
Photographs are not to scale and are not true representations of the products in question.

for current information see: www.lappusa.com • www.lappcanada.com

SILVYN® HYGIENIC**Stainless steel connector for SILVYN® FG & FG NM conduit**

SILVYN® HYGIENIC is designed especially for use with SILVYN® FG and SILVYN® FG NM conduit for a bacteria resistant, edge-free, robust and reliable connection in food machines and facilities. It has no gaps, voids, or outer-facing threads to eliminate the risk of contamination. It also has high chemical and thermal stability with very aggressive media such as detergents and disinfectants, acids and alkalis, etc.

Approvals**Complete the installation**

SILVYN®
FG NM
page 574



SILVYN® FG
page 575

Technical data**Material:**

- body: stainless steel 316
- insert: nickel-plated brass
- inner seal: polyamide 6
- sealing: special elastomer

**Temperature range:**

-50°C to +135°C

**IP Protection:**

IP66
IP67
IP68 (2 bar)
IP69

Part number	Thread	Internal diameter		Pack size	SILVYN® FG NM	SILVYN® FG	
		in	mm			white	blue
55510700	M16 x 1.5	0.422	10.7	1	55503370	55503279	55503286
55510701	M20 x 1.5	0.571	14.5	1	55503371	55503280	55503287
55510702	M25 x 1.5	0.737	18.7	1	55503372	55503281	55503288
55510703	M32 x 1.5	0.969	24.6	1	55503373	55503282	55503289
55510704	M40 x 1.5	1.288	32.7	1	55503374	55503283	55503290
55510705	M50 x 1.5	1.485	37.7	1	55503375	55503284	55503291
55510706	M63 x 1.5	1.929	49.0	1	55503376	55503285	55503292

SILVYN® FPAX-M

Watertight connector for SILVYN® FPAS conduit



SILVYN® FPAX-M is a connector designed especially for use with the SILVYN® FPAS to create a secure, watertight connection specifically in high vibration applications.

Approvals



Complete the installation



SILVYN®
FPAS
page 576

Technical data

Material:	halogen-free polyamide 66	IP Protection:	IP66 IP67 IP68 (2 bar) IP69
Temperature range:	-50°C to +135°C	Approvals:	UL fitting Lloyd's Register
Color:	black (RAL 9005), UV resistant gray (RAL 7031)		

Part number		Thread	Pack size	SILVYN® FPAS	
black	gray			black	gray
55506135	55506235	M16 x 1.5/1	10	61754015	61754010
55506145	55506245	M16 x 1.5/2	10	61754025	61754020
55506155	55506255	M20 x 1.5/1	10	61754025	61754020
55506165	55506265	M20 x 1.5/2	10	61754035	61754030
55506175	55506275	M25 x 1.5	10	61754045	61754040

Part number		Thread	Pack size	SILVYN® FPAS	
black	gray			black	gray
55506185	55506285	M32 x 1.5	10	61754055	61754050
55506195	55506295	M40 x 1.5	10	61754065	61754060
55506205	55507265	M50 x 1.5/1	10	61754065	61754060
55506215	55507275	M50 x 1.5/2	10	61754075	61754070
55506225	55507285	M63 x 1.5	10	61754305	61754300

If not otherwise specified, all values relating to the product are nominal values.
Photographs are not to scale and are not true representations of the products in question.

SILVYN® CC/CC FR

Non-fraying expandable PET sleeving



SILVYN® CC is a high-density braid that is used in industrial wire and harness applications and is excellent in bundling and routing wires where durability is crucial. SILVYN® CC FR is a flame-retardant version, designed to quickly self-extinguish and minimize the spread of flame.

Performance characteristics

- High-density braid does not fray when cut and expands without unraveling
- Resistant to oil, chemicals, and abrasion
- Increased braid density for fuller coverage

Approvals



Application advantage

- Hot knife is not required for cutting, improving safety
- Virtually frayless when cut with a hot knife
- Denser coverage provides for increased protection of substrates for increased product life

Technical data

Material:	polyethylene terephthalate (PET) filaments	Color:	- SILVYN® CC: BK: black GY: gray - SILVYN® CC FR: BW: black with white tracers WB: white with black tracers
Temperature range:	-75 °C to +125 °C (-103 °F to +257 °F)	Approvals:	UL CSA Attributes: VW-1 (SILVYN® CC FR) Additional: MIL-202 (SILVYN® CC FR) FAR 25 (SILVYN® CC FR)
Melting temperature:	- SILVYN® CC: 230 °C (446 °F) - SILVYN® CC FR: 250 °C (482 °F)		

SILVYN® CC

Part number replace "XX" with color code	Nominal size		Expansion range		Weight lbs/100 ft	Put-up spool lengths (ft)	
	in	mm	in	mm		bulk	min.
CC-1/8-XX	0.125	3.18	0.125 - 0.250	3.2 - 6.4	0.396	1000	100
CC-1/4-XX	0.250	6.35	0.156 - 0.438	4.0 - 11.1	0.464	1000	100
CC-3/8-XX	0.375	9.53	0.188 - 0.625	4.8 - 15.9	0.744	500	100
CC-1/2-XX	0.500	12.70	0.250 - 0.750	6.4 - 19.1	0.822	500	100
CC-3/4-XX	0.750	19.05	0.625 - 1.000	15.9 - 25.4	1.113	250	75
CC-1-XX	1.000	25.40	0.750 - 1.188	19.1 - 30.2	1.236	250	50
CC-1-1/4-XX	1.250	31.75	1.000 - 1.500	25.4 - 38.1	1.555	250	50
CC-1-1/2-XX	1.500	38.10	1.250 - 2.000	31.8 - 50.8	1.850	250	50

SILVYN® CC FR

Part number replace "XX" with color code	Nominal size		Expansion range		Weight lbs/100 ft	Put-up spool lengths (ft)	
	in	mm	in	mm		bulk	min.
CCFR-1/8-XX	0.125	3.18	0.125 - 0.250	3.2 - 6.4	0.396	1000	100
CCFR-1/4-XX	0.250	6.35	0.156 - 0.438	4.0 - 11.1	0.464	1000	100
CCFR-3/8-XX	0.375	9.53	0.188 - 0.625	4.8 - 15.9	0.744	500	100
CCFR-1/2-XX	0.500	12.70	0.250 - 0.750	6.4 - 19.1	0.822	500	100
CCFR-3/4-XX	0.750	19.05	0.625 - 1.000	15.9 - 25.4	1.113	250	75
CCFR-1-XX	1.000	25.40	0.750 - 1.188	19.1 - 30.2	1.236	250	50
CCFR-1-1/4-XX	1.250	31.75	1.000 - 1.500	25.4 - 38.1	1.555	250	50
CCFR-1-1/2-XX	1.500	38.10	1.250 - 2.000	31.8 - 50.8	1.850	250	50

If not otherwise specified, all values relating to the product are nominal values. Photographs are not to scale and are not true representations of the products in question.

SILVYN® PET/PET FR

Economical general purpose PET sleeving



SILVYN® PET is an economical solution that provides bundling and protection of wires, cables, and hoses. SILVYN® PET FR is a flame-retardant version, designed to quickly self-extinguish and minimize the spread of flame.

Approvals



Performance characteristics

- High resistance to gasoline, chemicals, and cleaning solvents
- Increased braid density for fuller coverage
- Expands up to 150%
- Halogen-free
- Cuts cleanly when a hot knife is used

Application advantage

- Denser coverage provides for increased protection of substrates for increased product life
- Economical alternative for low budget installations
- Increased product life in industrial applications where gasoline, chemicals, and cleaning solvents are present
- Available in a wide variety of colors for color-coding installations

Color codes for SILVYN® PET

NR: neon red	NP: neon pink	NY: neon yellow
NG: neon green	NB: neon blue	BE: beige
CB: carbon	NX: nitrox	PT: patriot

RD: red	OR: orange	YL: yellow	GN: green
BL: blue	PP: purple	CL: clear	BK: black
WH: white	GY: gray		

Technical Data

Material:	polyethylene terephthalate (PET) filaments	Color:	see color code chart
Temperature range:	-75°C to +125°C (-103°F to +257°F)	- SILVYN® PET:	BW: black with white tracers
Melting temperature:		- SILVYN® PET FR:	WB: white with black tracers
- SILVYN® PET:	230°C (446°F)	Approvals:	UL
- SILVYN® PET FR:	250°C (257°F)		CSA
			FAR 25
			FMVSS 302
			VW-1 (SILVYN® PET FR)
			MIL-202 (SILVYN® PET FR)

SILVYN® PET

Part number replace "XX" with color code	Nominal size in	Expansion range in	Weight lbs/100 ft	Put-up spool lengths (ft)	
				bulk	min.
PET-1/8-XX	0.125	0.094 - 0.250	0.16	1000	225
PET-1/4-XX	0.250	0.125 - 0.438	0.24	1000	200
PET-3/8-XX	0.375	0.188 - 0.625	0.57	500	125
PET-1/2-XX	0.500	0.250 - 0.750	0.77	500	100
PET-5/8-XX	0.625	0.375 - 1.000	0.95	500	100
PET-3/4-XX	0.750	0.500 - 1.250	1.20	250	75
PET-1-XX	1.000	0.625 - 1.625	1.34	250	65
PET-1-1/4-XX	1.250	0.750 - 1.750	1.60	250	50
PET-1-1/2-XX	1.500	1.0 - 2.5	1.96	200	40
PET-1-3/4-XX	1.750	1.25 - 2.50	2.70	200	30
PET-2-XX	2.000	1.5 - 3.5	3.30	200	50
PET-2-1/2-XX	2.500	1.75 - 4.50	3.80	200	50
PET-3-XX	3.000	2.50 - 4.75	4.00	100	50

SILVYN® PET FR

Part number replace "XX" with color code	Nominal Size in	Expansion Range in	Weight lbs/100 ft	Put-up Spool Lengths (ft)	
				bulk	min.
PETFR-1/8-XX	0.125	0.094 - 0.250	0.16	1000	225
PETFR-1/4-XX	0.250	0.125 - 0.438	0.24	1000	200
PETFR-3/8-XX	0.375	0.188 - 0.625	0.57	500	125
PETFR-1/2-XX	0.500	0.250 - 0.750	0.77	500	100
PETFR-3/4-XX	0.750	0.500 - 1.250	1.20	250	75
PETFR-1-1/4-XX	1.250	0.750 - 1.750	1.60	250	50
PETFR-1-1/2-XX	1.500	1.0 - 2.5	1.96	200	40
PETFR-1-3/4-XX	1.750	1.25 - 2.75	2.70	200	30
PETFR-2-XX	2.000	1.5 - 3.5	3.30	200	50
PETFR-2-1/2-XX	2.500	1.75 - 4.50	3.80	200	50
PETFR-3-XX	3.000	2.50 - 4.75	4.00	100	50

If not otherwise specified, all values relating to the product are nominal values. Photographs are not to scale and are not true representations of the products in question.

SILVYN® SW/SW FR

Semi-rigid PET sleeve with split wrap for easy installation



SILVYN® SW is a pre-formed PET sleeve provided with a built-in split. Simply pull the wrap apart, install your wire and hose, and release. SILVYN® SW FR is a flame-retardant version, designed to quickly self-extinguish and minimize the spread of flame.

Approvals



Performance characteristics

- More flexible than spiral wrap
- Tight bend radius without splitting open
- 25% edge overlap
- Halogen-free
- SILVYN® SW FR comes in an easy-access box to protect its shape

Application advantage

- Pre-formed split arrows for easy installation of wire and hoses
- Provides a large overlap for full coverage over splices and in-line connections
- Ease of installation provides for labor and costs savings
- Quiet in installations with high vibration

Technical data

Material:	polyethylene terephthalate (PET) filaments	Color:	black
Temperature range:	-75 °C to +125 °C (-103 °F to +257 °F)	Approvals:	UL CSA VW-1 (SILVYN® SW FR)
Melting temperature:			
- SILVYN® SW:	230 °C (446 °F)		
- SILVYN® SW FR:	250 °C (482 °F)		

SILVYN® SW

Part number	Nominal size		Weight lbs/100 ft	Put-up spool lengths (ft)	
	in	mm		bulk	min.
SW - 1/8	0.125	3.2	400	100	0.20
SW - 1/4	0.250	6.4	200	100	0.60
SW - 1/2	0.500	12.7	150	75	1.40
SW - 3/4	0.750	19.1	100	50	1.60
SW - 1	1.0	25.4	100	50	2.00
SW - 1-1/2	1.5	38.1	75	25	2.70
SW - 2	2.0	50.8	50	25	3.60

SILVYN® SW FR

Part number	Nominal size		Weight lbs/100 ft	Put-up spool lengths (ft)	
	in	mm		bulk	min.
SWFR - 1/8	0.125	3.2	400	100	0.20
SWFR - 1/4	0.250	6.4	200	100	0.60
SWFR - 1/2	0.500	12.7	150	75	1.40
SWFR - 3/4	0.750	19.1	100	50	1.60
SWFR - 1	1.0	25.4	100	50	2.00
SWFR - 1-1/2	1.5	38.1	75	25	2.70
SWFR - 2	2.0	50.8	50	25	3.60

If not otherwise specified, all values relating to the product are nominal values. Photographs are not to scale and are not true representations of the products in question.

Serrated edge scissors



These scissors have a serrated blade on an angle to easily cut sleeving. Other cutting tools are available upon request.

Part number
812056

Bench-mounted hot knife



The bench-mounted hot knife has a 2½" cutting blade and heats to 600°C in 30 seconds. 110V for operation.

Description	Part number
hot knife	812057
replacement blades	812058

Conduit scissors



SILVYN® conduit scissors simplifies preparation of protective conduit with proper and safe cutting. Suitable for non-metallic conduit, e.g: SILVYN® EL/ELU/ELÖ/ELT, SILVYN® RILL PA 6/PA 12, SILVYN® SINUS PA 6, SILVYN® SPLIT, and SILVYN® FPAS.

Description	Part number	Max. cutting range	
		in	mm
CC01	61722285	1.338	34
CC02	61722286	2.638	67

SILVYN® CHAIN

Series	Characteristics	Application areas
<p>Light series</p> 	<ul style="list-style-type: none"> • Simple bolt system • Inner height: 0.5 - 1.5 in (12 - 39 mm) • Inner width: 0.5 - 5.9 in (12 - 150 mm) • 7 types available 	<p>Light duty applications; automation; smaller robot gantries; textile equipment with long travel; printing equipment</p>
<p>Medium series</p> 	<ul style="list-style-type: none"> • Single yellow pin system • Inner height: 0.7 - 3.0 in (18 - 75.5 mm) • Inner width: 0.6 - 19.6 in (14 - 498 mm) • 12 types available 	<p>Medium duty applications; automation; handling equipment; CNC machines; medium sliding applications</p>
<p>Heavy series</p> 	<ul style="list-style-type: none"> • Triple yellow pin system for high performance • Inner height: 1.2 - 4.4 in (30 - 112 mm) • Inner width: 1.5 - 23.6 in (38 - 600 mm) • 12 types available in nylon, aluminum, or stainless steel 	<p>Heavy duty applications; automation with high travel frequency; outdoor equipment; movement with high lateral acceleration</p>
<p>Sliding series</p> 	<ul style="list-style-type: none"> • Long sliding distances • Triple yellow pin system for high performance • Inner height: 1.2 - 3.2 in (30 - 80.5 mm) • Inner width: 33.9 - 21.2 in (61 - 539 mm) • 15 types available in nylon, aluminum, or stainless steel 	<p>Sliding applications with high speeds and cable weight; applications with long life-cycles</p>
<p>Protection series</p> 	<ul style="list-style-type: none"> • Single yellow pin system • Enclosed design for extra protection • Inner height: 1.0 - 3.0 in (25 - 75.5 mm) • Inner width: 1.6 - 19.2 in (40 - 488 mm) • 12 types available in many widths 	<p>Medium duty applications; automation; dirty environments; machine tool centers</p>
<p>Robot series</p> 	<ul style="list-style-type: none"> • Universal solution for rotary applications • Open design for fast cable laying • Unique 3-dimensional link system • Cables isolated in three separate chambers 	<p>Robot/torsion applications; welding robots; painting robots; handling robots</p>
<p>Steel chain</p> 	<ul style="list-style-type: none"> • Highest load capacity and chemical resistance • Metal bolt system • Inner height: 1.3 - 7.2 in (32 - 182 mm) • Inner width: 3.1 - 23.6 in (79 - 600 mm) • 11 standard types available • Customized versions with larger widths or combinations of materials available 	<p>Extremely heavy duty applications; steel mills; foundries; off-shore; machining centers with long travel; harsh environments</p>